



NETPower SNMP



A POWERFUL WEB BASED INTERFACE SOLUTION FOR UPS & OTHER EQUIPMENT.

The **NETPower SNMP Network Interface Card** integrates multi-network communication protocols to enable comprehensive easy-to-understand remote monitoring and management of UPS.

FEATURES

- Standard Internet protocols supported
- Stand-alone embedded system. No PC required.
- Web based access to facilitate easy monitoring and control of UPS
- Support for serial and modem connectivity to enable remote control when networking is unavailable.
- 10 M/100 M Fast Ethernet auto-sense.

CAPILITIES

- Managing the UPS
- Securing the UPS - define who has the rights to access to the UPS.
- Shutdown UPS
- Event Notifications
- Setting a Schedule
- Remotely Controlling the UPS
- Analyzing Event Logs
- PC/Server System shutdown
- Upgrading Firmware

NOTIFICATION TYPES

- Supports TRAP notification
- Supports SMTP Email notification without PC required.
- Supports Pager notification.
- Supports PC user notification.

INCLUDED

- Smart Config utility - SMCONFIG. EXE
- .NETpower Device Manager for Windows - to manage your UPS.
- OnEvent - agent will shut down PC system automatically.
- Standard MIB files for UPS/NMS applications.

MULTI-MONITORING CAPABILITY

- All SNMP compatible NMS's.
- SNMPView in Windows.
- Telnet.
- Browser.
- RS-232 serial communications.

NETWORK PROTOCOLS SUPPORTED

Support for multi-Network protocols and TCP/IP applications such as:

- SNMP
- HTTP
- Internet Email (SMTP)
- Internet Time Sync (SNTP)
- Domain Name System (DNS)
- DHCP

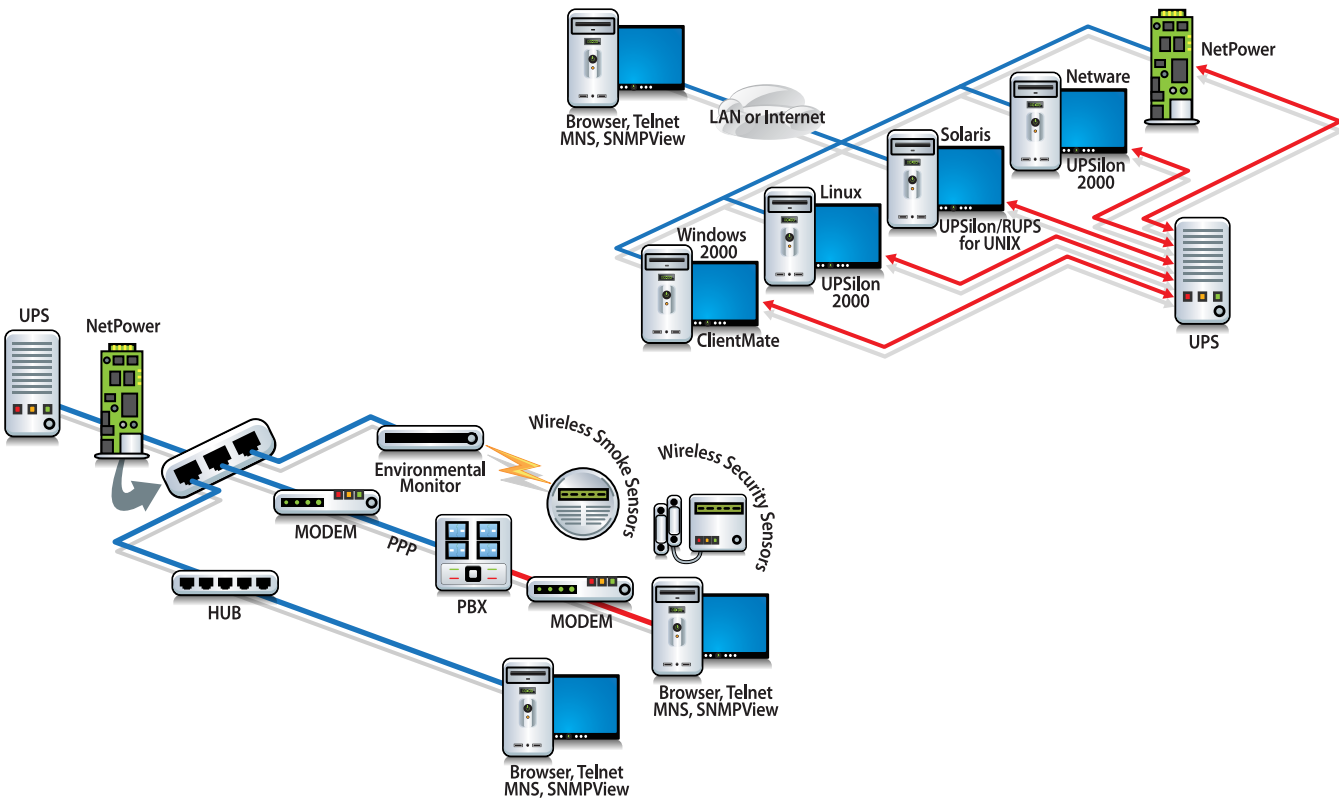
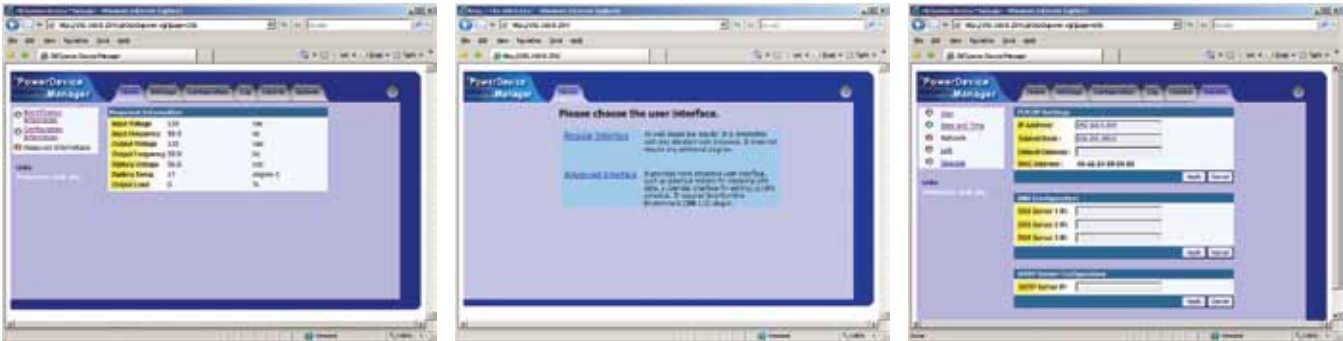
NMS SYSTEMS SUPPORTED

- HP OpenView.
- IBM NetView.
- Novell NMS.
- Sun SunNet Manager.
- Other SNMP compatible NMS's

OPERATING SYSTEMS/PLATFORMS SUPPORTED

- Windows Vista
- Windows 7
- Windows 95/98
- Windows NT/2000/XP
- Linux/UNIX
- IBM OS/2

WE GO THE DISTANCE FOR YOU



2538 E. 54th Street
 Huntington Park, CA 90255
 Office: 310-689-2328
 Fax: 310-689-2329
sales@marathon-power.com
info@marathon-power.com
www.marathon-power.com

Your local representative / distributor is